

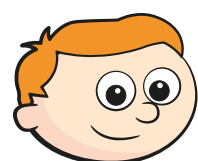
- 5 Find three ways to make the fractions equivalent.

a) $\frac{1}{\square} = \frac{7}{\square}$ b) $\frac{7}{\square} = \frac{14}{\square}$ c) $\frac{\square}{7} = \frac{\square}{14}$

$\frac{1}{\square} = \frac{7}{\square}$ $\frac{7}{\square} = \frac{14}{\square}$ $\frac{\square}{7} = \frac{\square}{14}$

$\frac{1}{\square} = \frac{7}{\square}$ $\frac{7}{\square} = \frac{14}{\square}$ $\frac{\square}{7} = \frac{\square}{14}$

- 6 Ron is finding equivalent fractions to $\frac{1}{4}$



$\frac{1}{4}$ is equivalent to $\frac{5}{8}$
and $\frac{9}{12}$

Do you agree with Ron? _____

Draw a diagram to support your answer.

Compare answers with a partner.

- 7 Here are some equivalent fractions.

Find the values of A, B and C.

$\frac{A}{9}$ $\frac{3}{B}$ $\frac{2}{18}$ $\frac{C}{90}$

A = \square

B = \square

C = \square

- 8 Here are three fraction cards.

All the fractions are equivalent.

$\frac{3}{A}$ $\frac{B}{14}$ $\frac{12}{C}$

A + B = 13

Work out the value of C.

C = \square

9 $\frac{1}{5} = \frac{3}{1 + \bullet}$

Find the value of \bullet

$\bullet = \square$