

3 Convert the improper fractions to mixed numbers.

a) $\frac{10}{2} = \square$

e) $\frac{12}{5} = \square$

b) $\frac{10}{3} = \square$

f) $\frac{13}{6} = \square$

c) $\frac{10}{4} = \square$

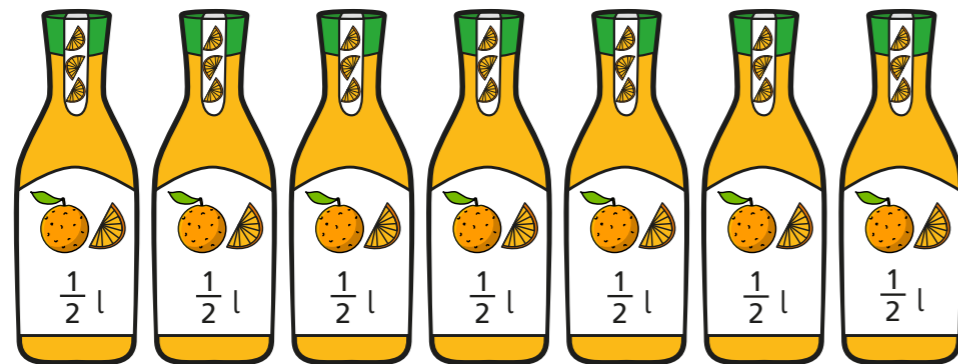
g) $\frac{13}{7} = \square$

d) $\frac{10}{5} = \square$

h) $\frac{31}{8} = \square$

4 Eva has 7 bottles of juice.

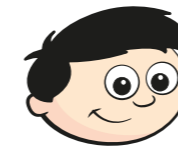
Each bottle contains half a litre of juice.



How many litres of juice does Eva have altogether?

Write your answer as a mixed number.

5 Dexter is converting improper fractions.



$\frac{32}{3} = 3\frac{2}{3}$

Explain why Dexter is incorrect.

6 Find the value of ●

$\frac{27}{\text{●}} = \text{●} \frac{2}{\text{●}}$

● =

7 Find two possible values for ★ and ▲

$\frac{30}{\text{★}} = \text{▲} \frac{2}{\text{★}}$

★ =

▲ =

★ =

▲ =