

# **Year 4 MTC June 2024**

## **Multiplication Check**

**June 2024**

**3<sup>rd</sup> -21<sup>st</sup>**



# Why?

## Multiplication tables check

**Do you have a child in year 4 at primary school?**

If so, your child will be participating in the multiplication tables check (MTC) in June.

The purpose of the check is to determine whether your child can fluently recall their times tables up to 12, which is essential for future success in mathematics. It will also help your child's school to identify if your child may need additional support.



## **What is the multiplication tables check?**

It is an on-screen check consisting of 25 times table questions. Your child will be able to answer 3 practice questions before taking the actual check. They will then have 6 seconds to answer each question. On average, the check should take no longer than 5 minutes to complete.

## **What if my child cannot access the check?**

There are several access arrangements available for the check, which can be used to support pupils with specific needs. Your child's teacher will ensure that the access arrangements are appropriate for your child before they take the check in June.

The check was designed to be inclusive and accessible to as many children as possible, including those with special educational needs or disability (SEND) or English as an additional language (EAL). However, there may be some circumstances in which it will not be appropriate for a pupil to take the check, even when using suitable access arrangements.

If you have any concerns about your child accessing the check, you should discuss this with your child's headteacher.

## **Do I need to do anything to prepare my child for the check?**

No, you do not need to do anything additional to prepare your child for the check. As part of usual practice, teachers may ask you to practise times tables with your child.

Schools will have unlimited access to a 'try it out' area from April. They can use this to make sure pupils have the necessary support to access the check. This includes opportunities for pupils to familiarise themselves with the check application and try out any access arrangements that may be required.

## **How will the results be used?**

Schools will have access to all their pupils' results, to allow them to identify pupils who need additional support.

## **Will I receive feedback on my child's check?**

Yes. Your child's teacher will share your child's score with you, as they would with all national curriculum assessments. There is no pass mark for the check.

**What are we doing in school to support your child to remember and recite their tables at speed?**

**WE LOVE OUR TABLES!**

**They are nothing to be afraid of. We have found lots of ways to help the facts go in to our long term memory so that the have all the facts at the tips of our tongues!**



1 times tables	2 times tables	3 times tables	4 times tables	5 times tables	6 times tables	7 times tables	8 times tables	9 times tables	10 times tables	11 times tables	12 times tables
$1 \times 1 = 1$	$1 \times 2 = 2$	$1 \times 3 = 3$	$1 \times 4 = 4$	$1 \times 5 = 5$	$1 \times 6 = 6$	$1 \times 7 = 7$	$1 \times 8 = 8$	$1 \times 9 = 9$	$1 \times 10 = 10$	$1 \times 11 = 11$	$1 \times 12 = 12$
$2 \times 1 = 2$	$2 \times 2 = 4$	$2 \times 3 = 6$	$2 \times 4 = 8$	$2 \times 5 = 10$	$2 \times 6 = 12$	$2 \times 7 = 14$	$2 \times 8 = 16$	$2 \times 9 = 18$	$2 \times 10 = 20$	$2 \times 11 = 22$	$2 \times 12 = 24$
$3 \times 1 = 3$	$3 \times 2 = 6$	$3 \times 3 = 9$	$3 \times 4 = 12$	$3 \times 5 = 15$	$3 \times 6 = 18$	$3 \times 7 = 21$	$3 \times 8 = 24$	$3 \times 9 = 27$	$3 \times 10 = 30$	$3 \times 11 = 33$	$3 \times 12 = 36$
$4 \times 1 = 4$	$4 \times 2 = 8$	$4 \times 3 = 12$	$4 \times 4 = 16$	$4 \times 5 = 20$	$4 \times 6 = 24$	$4 \times 7 = 28$	$4 \times 8 = 32$	$4 \times 9 = 36$	$4 \times 10 = 40$	$4 \times 11 = 44$	$4 \times 12 = 48$
$5 \times 1 = 5$	$5 \times 2 = 10$	$5 \times 3 = 15$	$5 \times 4 = 20$	$5 \times 5 = 25$	$5 \times 6 = 30$	$5 \times 7 = 35$	$5 \times 8 = 40$	$5 \times 9 = 45$	$5 \times 10 = 50$	$5 \times 11 = 55$	$5 \times 12 = 60$
$6 \times 1 = 6$	$6 \times 2 = 12$	$6 \times 3 = 18$	$6 \times 4 = 24$	$6 \times 5 = 30$	$6 \times 6 = 36$	$6 \times 7 = 42$	$6 \times 8 = 48$	$6 \times 9 = 54$	$6 \times 10 = 60$	$6 \times 11 = 66$	$6 \times 12 = 72$
$7 \times 1 = 7$	$7 \times 2 = 14$	$7 \times 3 = 21$	$7 \times 4 = 28$	$7 \times 5 = 35$	$7 \times 6 = 42$	$7 \times 7 = 49$	$7 \times 8 = 56$	$7 \times 9 = 63$	$7 \times 10 = 70$	$7 \times 11 = 77$	$7 \times 12 = 84$
$8 \times 1 = 8$	$8 \times 2 = 16$	$8 \times 3 = 24$	$8 \times 4 = 32$	$8 \times 5 = 40$	$8 \times 6 = 48$	$8 \times 7 = 56$	$8 \times 8 = 64$	$8 \times 9 = 72$	$8 \times 10 = 80$	$8 \times 11 = 88$	$8 \times 12 = 96$
$9 \times 1 = 9$	$9 \times 2 = 18$	$9 \times 3 = 27$	$9 \times 4 = 36$	$9 \times 5 = 45$	$9 \times 6 = 54$	$9 \times 7 = 63$	$9 \times 8 = 72$	$9 \times 9 = 81$	$9 \times 10 = 90$	$9 \times 11 = 99$	$9 \times 12 = 108$
$10 \times 1 = 10$	$10 \times 2 = 20$	$10 \times 3 = 30$	$10 \times 4 = 40$	$10 \times 5 = 50$	$10 \times 6 = 60$	$10 \times 7 = 70$	$10 \times 8 = 80$	$10 \times 9 = 90$	$10 \times 10 = 100$	$10 \times 11 = 110$	$10 \times 12 = 120$
$11 \times 1 = 11$	$11 \times 2 = 22$	$11 \times 3 = 33$	$11 \times 4 = 44$	$11 \times 5 = 55$	$11 \times 6 = 66$	$11 \times 7 = 77$	$11 \times 8 = 88$	$11 \times 9 = 99$	$11 \times 10 = 110$	$11 \times 11 = 121$	$11 \times 12 = 132$
$12 \times 1 = 12$	$12 \times 2 = 24$	$12 \times 3 = 36$	$12 \times 4 = 48$	$12 \times 5 = 60$	$12 \times 6 = 72$	$12 \times 7 = 84$	$12 \times 8 = 96$	$12 \times 9 = 108$	$12 \times 10 = 120$	$12 \times 11 = 132$	$12 \times 12 = 144$

144  
facts

1 times tables	2 times tables	3 times tables	4 times tables	5 times tables	6 times tables	7 times tables	8 times tables	9 times tables
$1 \times 1 = 1$	$1 \times 2 = 2$	$1 \times 3 = 3$	$1 \times 4 = 4$	$1 \times 5 = 5$	$1 \times 6 = 6$	$1 \times 7 = 7$	$1 \times 8 = 8$	$1 \times 9 = 9$
$2 \times 1 = 2$	$2 \times 2 = 4$	$2 \times 3 = 6$	$2 \times 4 = 8$	$2 \times 5 = 10$	$2 \times 6 = 12$	$2 \times 7 = 14$	$2 \times 8 = 16$	$2 \times 9 = 18$
$3 \times 1 = 3$	$3 \times 2 = 6$	$3 \times 3 = 9$	$3 \times 4 = 12$	$3 \times 5 = 15$	$3 \times 6 = 18$	$3 \times 7 = 21$	$3 \times 8 = 24$	$3 \times 9 = 27$
$4 \times 1 = 4$	$4 \times 2 = 8$	$4 \times 3 = 12$	$4 \times 4 = 16$	$4 \times 5 = 20$	$4 \times 6 = 24$	$4 \times 7 = 28$	$4 \times 8 = 32$	$4 \times 9 = 36$
$5 \times 1 = 5$	$5 \times 2 = 10$	$5 \times 3 = 15$	$5 \times 4 = 20$	$5 \times 5 = 25$	$5 \times 6 = 30$	$5 \times 7 = 35$	$5 \times 8 = 40$	$5 \times 9 = 45$
$6 \times 1 = 6$	$6 \times 2 = 12$	$6 \times 3 = 18$	$6 \times 4 = 24$	$6 \times 5 = 30$	$6 \times 6 = 36$	$6 \times 7 = 42$	$6 \times 8 = 48$	$6 \times 9 = 54$
$7 \times 1 = 7$	$7 \times 2 = 14$	$7 \times 3 = 21$	$7 \times 4 = 28$	$7 \times 5 = 35$	$7 \times 6 = 42$	$7 \times 7 = 49$	$7 \times 8 = 56$	$7 \times 9 = 63$
$8 \times 1 = 8$	$8 \times 2 = 16$	$8 \times 3 = 24$	$8 \times 4 = 32$	$8 \times 5 = 40$	$8 \times 6 = 48$	$8 \times 7 = 56$	$8 \times 8 = 64$	$8 \times 9 = 72$
$9 \times 1 = 9$	$9 \times 2 = 18$	$9 \times 3 = 27$	$9 \times 4 = 36$	$9 \times 5 = 45$	$9 \times 6 = 54$	$9 \times 7 = 63$	$9 \times 8 = 72$	$9 \times 9 = 81$
$10 \times 1 = 10$	$10 \times 2 = 20$	$10 \times 3 = 30$	$10 \times 4 = 40$	$10 \times 5 = 50$	$10 \times 6 = 60$	$10 \times 7 = 70$	$10 \times 8 = 80$	$10 \times 9 = 90$
$11 \times 1 = 11$	$11 \times 2 = 22$	$11 \times 3 = 33$	$11 \times 4 = 44$	$11 \times 5 = 55$	$11 \times 6 = 66$	$11 \times 7 = 77$	$11 \times 8 = 88$	$11 \times 9 = 99$
$12 \times 1 = 12$	$12 \times 2 = 24$	$12 \times 3 = 36$	$12 \times 4 = 48$	$12 \times 5 = 60$	$12 \times 6 = 72$	$12 \times 7 = 84$	$12 \times 8 = 96$	$12 \times 9 = 108$

108 facts



2 times tables	3 times tables	4 times tables	5 times tables	6 times tables	7 times tables	8 times tables	9 times tables
$1 \times 2 = 2$	$1 \times 3 = 3$	$1 \times 4 = 4$	$1 \times 5 = 5$	$1 \times 6 = 6$	$1 \times 7 = 7$	$1 \times 8 = 8$	$1 \times 9 = 9$
$2 \times 2 = 4$	$2 \times 3 = 6$	$2 \times 4 = 8$	$2 \times 5 = 10$	$2 \times 6 = 12$	$2 \times 7 = 14$	$2 \times 8 = 16$	$2 \times 9 = 18$
$3 \times 2 = 6$	$3 \times 3 = 9$	$3 \times 4 = 12$	$3 \times 5 = 15$	$3 \times 6 = 18$	$3 \times 7 = 21$	$3 \times 8 = 24$	$3 \times 9 = 27$
$4 \times 2 = 8$	$4 \times 3 = 12$	$4 \times 4 = 16$	$4 \times 5 = 20$	$4 \times 6 = 24$	$4 \times 7 = 28$	$4 \times 8 = 32$	$4 \times 9 = 36$
$5 \times 2 = 10$	$5 \times 3 = 15$	$5 \times 4 = 20$	$5 \times 5 = 25$	$5 \times 6 = 30$	$5 \times 7 = 35$	$5 \times 8 = 40$	$5 \times 9 = 45$
$6 \times 2 = 12$	$6 \times 3 = 18$	$6 \times 4 = 24$	$6 \times 5 = 30$	$6 \times 6 = 36$	$6 \times 7 = 42$	$6 \times 8 = 48$	$6 \times 9 = 54$
$7 \times 2 = 14$	$7 \times 3 = 21$	$7 \times 4 = 28$	$7 \times 5 = 35$	$7 \times 6 = 42$	$7 \times 7 = 49$	$7 \times 8 = 56$	$7 \times 9 = 63$
$8 \times 2 = 16$	$8 \times 3 = 24$	$8 \times 4 = 32$	$8 \times 5 = 40$	$8 \times 6 = 48$	$8 \times 7 = 56$	$8 \times 8 = 64$	$8 \times 9 = 72$
$9 \times 2 = 18$	$9 \times 3 = 27$	$9 \times 4 = 36$	$9 \times 5 = 45$	$9 \times 6 = 54$	$9 \times 7 = 63$	$9 \times 8 = 72$	$9 \times 9 = 81$
$10 \times 2 = 20$	$10 \times 3 = 30$	$10 \times 4 = 40$	$10 \times 5 = 50$	$10 \times 6 = 60$	$10 \times 7 = 70$	$10 \times 8 = 80$	$10 \times 9 = 90$
$11 \times 2 = 22$	$11 \times 3 = 33$	$11 \times 4 = 44$	$11 \times 5 = 55$	$11 \times 6 = 66$	$11 \times 7 = 77$	$11 \times 8 = 88$	$11 \times 9 = 99$
$12 \times 2 = 24$	$12 \times 3 = 36$	$12 \times 4 = 48$	$12 \times 5 = 60$	$12 \times 6 = 72$	$12 \times 7 = 84$	$12 \times 8 = 96$	$12 \times 9 = 108$

96  
facts

2 times  
tables

3 times  
tables

4 times  
tables

5 times  
tables

6 times  
tables

7 times  
tables

8 times  
tables

9 times  
tables

$2 \times 2 = 4$

$2 \times 3 = 6$

$2 \times 4 = 8$

$2 \times 5 = 10$

$2 \times 6 = 12$

$2 \times 7 = 14$

$2 \times 8 = 16$

$2 \times 9 = 18$

$3 \times 2 = 6$

$3 \times 3 = 9$

$3 \times 4 = 12$

$3 \times 5 = 15$

$3 \times 6 = 18$

$3 \times 7 = 21$

$3 \times 8 = 24$

$3 \times 9 = 27$

$4 \times 2 = 8$

$4 \times 3 = 12$

$4 \times 4 = 16$

$4 \times 5 = 20$

$4 \times 6 = 24$

$4 \times 7 = 28$

$4 \times 8 = 32$

$4 \times 9 = 36$

$5 \times 2 = 10$

$5 \times 3 = 15$

$5 \times 4 = 20$

$5 \times 5 = 25$

$5 \times 6 = 30$

$5 \times 7 = 35$

$5 \times 8 = 40$

$5 \times 9 = 45$

$6 \times 2 = 12$

$6 \times 3 = 18$

$6 \times 4 = 24$

$6 \times 5 = 30$

$6 \times 6 = 36$

$6 \times 7 = 42$

$6 \times 8 = 48$

$6 \times 9 = 54$

$7 \times 2 = 14$

$7 \times 3 = 21$

$7 \times 4 = 28$

$7 \times 5 = 35$

$7 \times 6 = 42$

$7 \times 7 = 49$

$7 \times 8 = 56$

$7 \times 9 = 63$

$8 \times 2 = 16$

$8 \times 3 = 24$

$8 \times 4 = 32$

$8 \times 5 = 40$

$8 \times 6 = 48$

$8 \times 7 = 56$

$8 \times 8 = 64$

$8 \times 9 = 72$

$9 \times 2 = 18$

$9 \times 3 = 27$

$9 \times 4 = 36$

$9 \times 5 = 45$

$9 \times 6 = 54$

$9 \times 7 = 63$

$9 \times 8 = 72$

$9 \times 9 = 81$

64  
facts

2 times  
tables

3 times  
tables

4 times  
tables

5 times  
tables

6 times  
tables

7 times  
tables

8 times  
tables

9 times  
tables

$2 \times 2 = 4$

$3 \times 2 = 6$

$3 \times 3 = 9$

$4 \times 2 = 8$

$4 \times 3 = 12$

$4 \times 4 = 16$

$5 \times 2 = 10$

$5 \times 3 = 15$

$5 \times 4 = 20$

$5 \times 5 = 25$

$6 \times 2 = 12$

$6 \times 3 = 18$

$6 \times 4 = 24$

$6 \times 5 = 30$

$6 \times 6 = 36$

$7 \times 2 = 14$

$7 \times 3 = 21$

$7 \times 4 = 28$

$7 \times 5 = 35$

$7 \times 6 = 42$

$7 \times 7 = 49$

$8 \times 2 = 16$

$8 \times 3 = 24$

$8 \times 4 = 32$

$8 \times 5 = 40$

$8 \times 6 = 48$

$8 \times 7 = 56$

$8 \times 8 = 64$

$9 \times 2 = 18$

$9 \times 3 = 27$

$9 \times 4 = 36$

$9 \times 5 = 45$

$9 \times 6 = 54$

$9 \times 7 = 63$

$9 \times 8 = 72$

$9 \times 9 = 81$

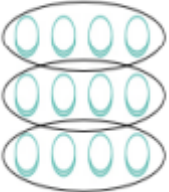
36  
facts

**If you children know these 36 facts,  
they will be able to access the rest  
of the Year 5 and 6 curriculum really  
easily!**



# Our Daily Times Table Workout!

Sessions	New Facts	Retrieval Practice
1	0x, 1x	
2	2x	0x, 1x
3	x10	0x, 1x, 2x
4	x5	0x, 1x, 2x, 10x
5	<b>Low stakes test of 0x, 1x, 2x, x10, 5x</b> <i>(including division and possibly fraction facts)</i>	
6	4x	0x, 1x, 2x, 10x, 5x
7	8x	0x, 1x, 2x, 10x, 5x, 4x
8	3x	0x, 1x, 2x, 10x, 5x, 4x, 8x
9	6x	0x, 1x, 2x, 10x, 5x, 4x, 8x, 3x
10	<b>Low stakes test of 0x, 1x, 2x, 10x, 5x, 4x, 8x, 3x, 6x</b> <i>(including division and fraction facts)</i>	
11	9x	0x, 1x, 2x, 10x, 5x, 4x, 8x, 3x, 6x
12	7x	0x, 1x, 2x, 10x, 5x, 4x, 8x, 3x, 6x, 9x
13	11x	0x, 1x, 2x, 10x, 5x, 4x, 8x, 3x, 6x, 9x, 7x
14	12x	0x, 1x, 2x, 10x, 5x, 4x, 8x, 3x, 6x, 9x, 7x, 11x
15	<b>Low stakes test of all facts</b> <i>(including division and fraction facts)</i>	

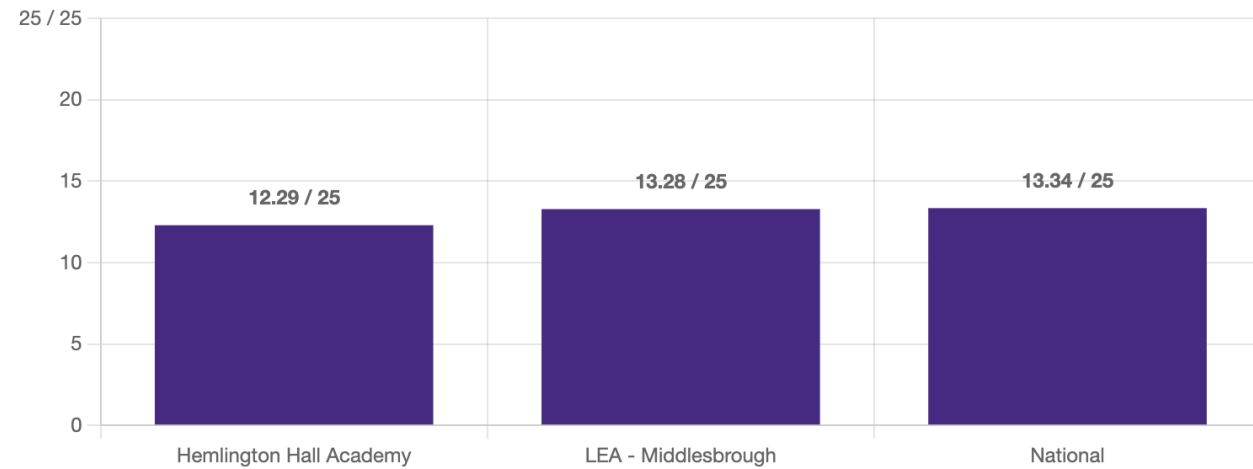
<p><b>Table Fact</b></p> $3 \times 4 = 12$	<p><b>Draw an array</b></p> 
<p><b>Language</b></p> <p>3 'groups of' 4 equals 12</p>	<p><b>Repeated Addition</b></p> $4 + 4 + 4 = 3 \times 4 = 12$
<p><b>Commutative Property</b></p> $3 \times 4 = 4 \times 3$	<p><b>Distributive Property</b></p> $(2 \times 4) + (1 \times 4) = 3 \times 4$ <p>with arrays</p>
<p><b>Division Facts (inverse)</b></p>	<p><b>Applied Facts</b></p> $30 \times 4 = 120$



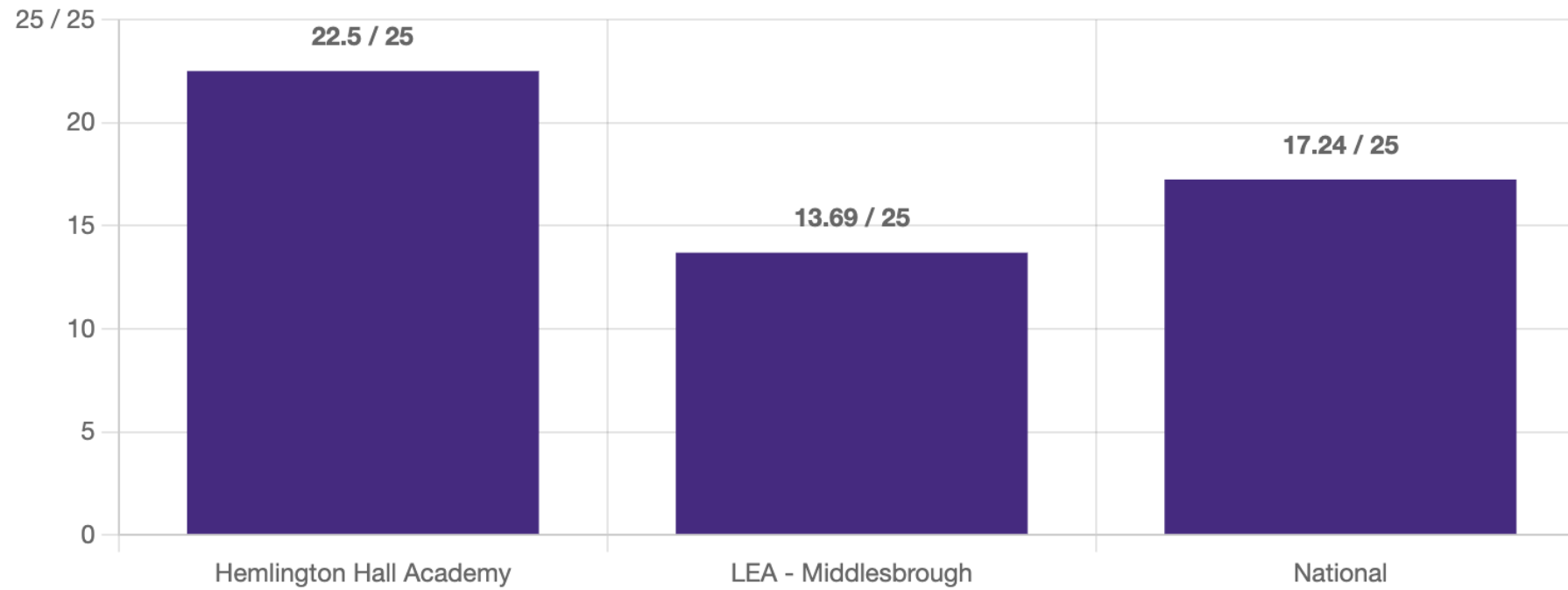
# Low Stakes Quizzes



## ii. Average Score Comparison



## ii. Average Score Comparison



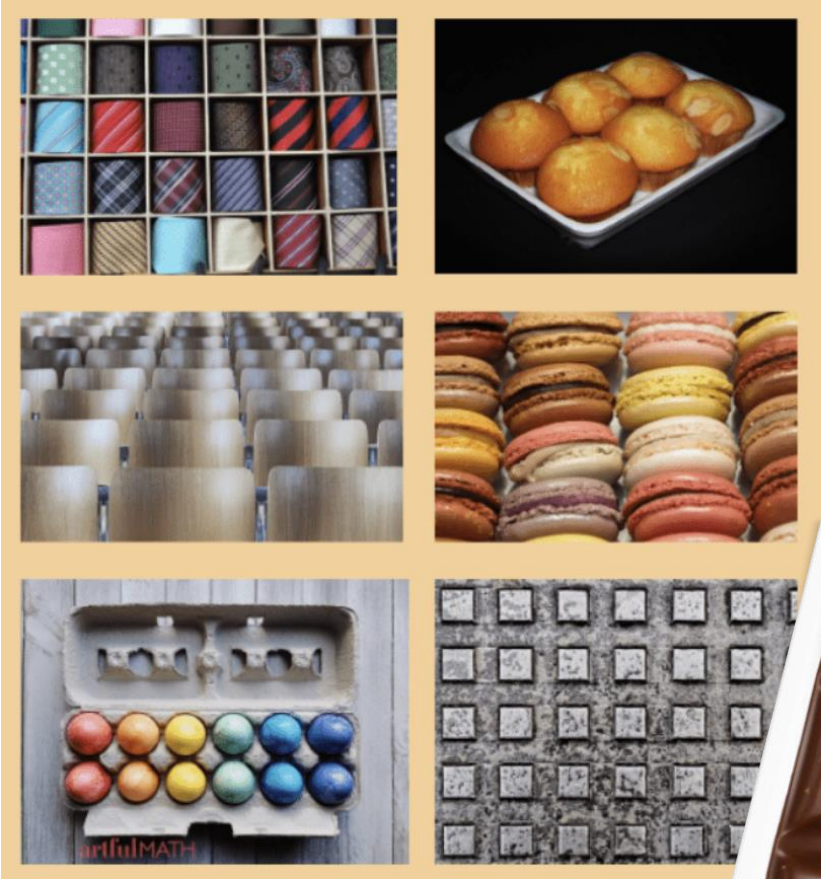
**Use the Time to Learn the  
Rhyme!**

# What can you do at home?

- Christmas Homework – Little gift in pack!
- TTRS at home!
- Lots of websites to support
- Quick fire questions in the bath!
- Singin in the car!

[https://www.youtube.com/watch?v=9XzfQUXqiYY&list=PLb7Q5jsm9eh\\_fdDPQmVpyp4XRu-raUbHc](https://www.youtube.com/watch?v=9XzfQUXqiYY&list=PLb7Q5jsm9eh_fdDPQmVpyp4XRu-raUbHc)

# Spots the tables at home?



Hom



Let's Have Some Fun!